

# R1 SUBULATE **TECTONA**



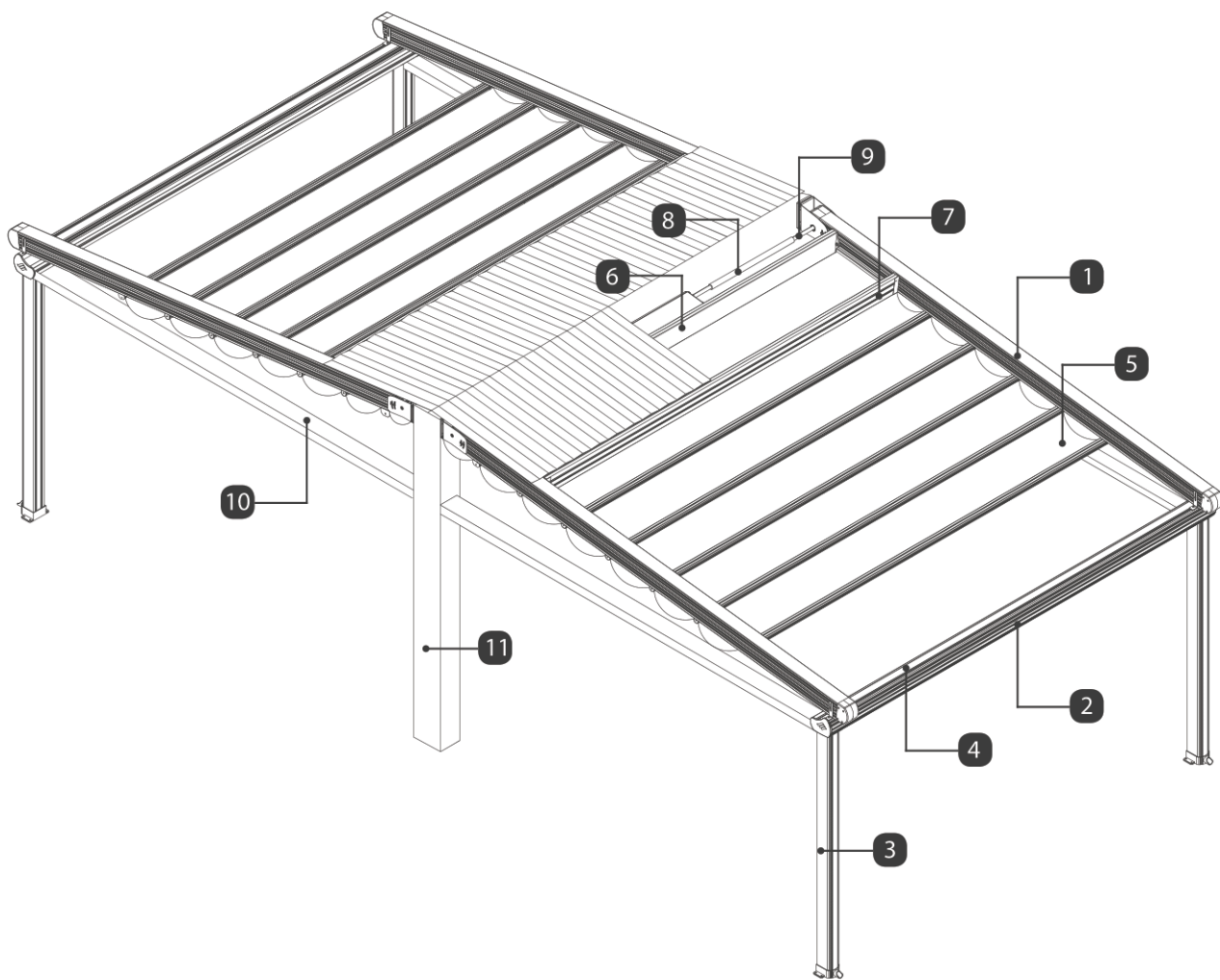
Technical Information List

V 240318

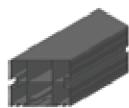
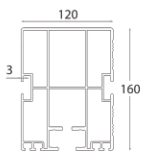




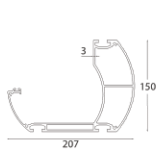




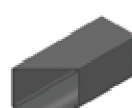
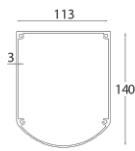
**1** Rafter Profile



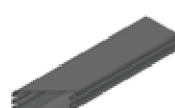
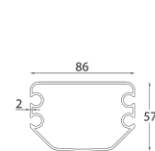
**2** Gutter Profile



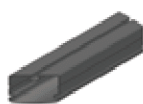
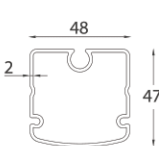
**3** Carrier Post Profile



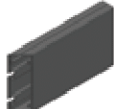
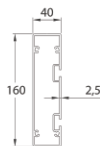
**4** Fabric Profile | Master



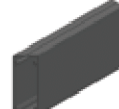
**5** Fabric Profile | Carrier



**6** Motor Box Profile



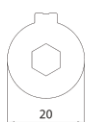
**7** Roof Sash Profile



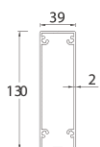
**8** Motor Shaft Pipe Profile | Thick



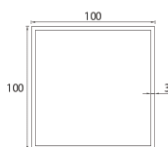
**9** Motor Shaft Pipe Profile | Thin



**10** Side Beam Profile



**11** Iron Profile 100x100



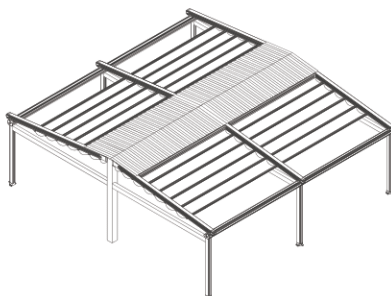
## Single Module

Max. Rafter Profile width as 4000  
Max. Carrier Post Profile width as 5000



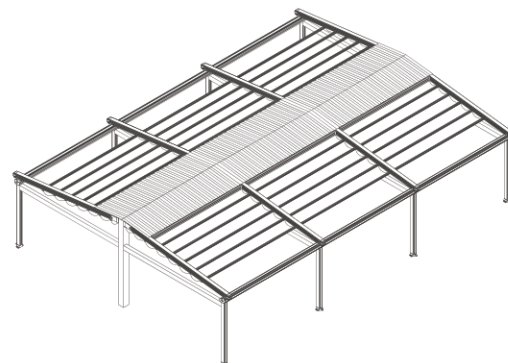
## Double Module

Max. Rafter Profile width as 8000  
Max. Carrier Post Profile width as 5000



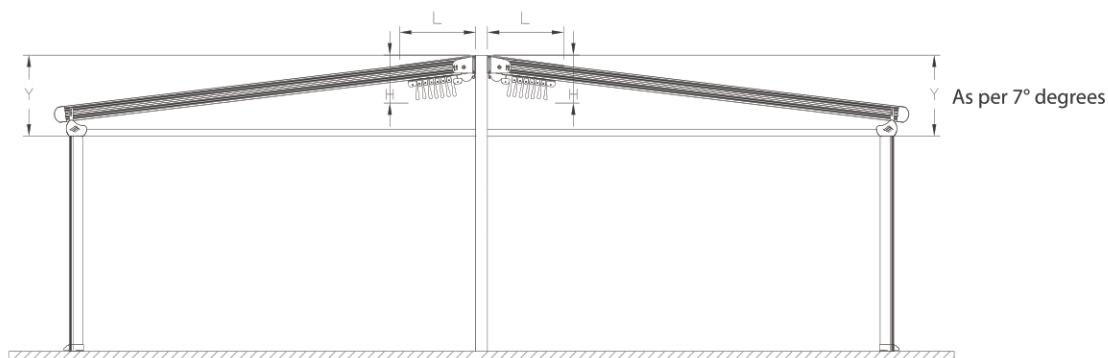
## Triple Module

Max. Rafter Profile width as 12000  
Max. Carrier Post Profile width as 2000



## Technical Side View

Size may vary upon the number of seals

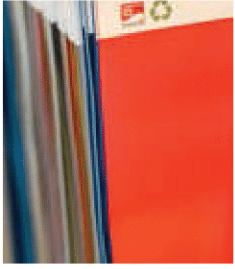


∇ Projection ^	Fabric Fall Height (H)	Hood Cover (L)	7° Degree Rule Fall Height (Y)	Fabric Profile Carrier
3000	542	710	680	7 pcs
4000	554	850	803	9 pcs
5000	566	990	925	11pcs
6000	578	1200	1048	13pcs
7000	590	1340	1171	15pcs
8000	602	1480	1294	17pcs
9000	614	1620	1417	19pcs
10000	626	1760	1540	21pcs

\* Distances between fabric profiles had been calculated and measured as 50 cm and it may. Vary upon the measurement of each project therefore you are kindly requested to Contact your key account manager in order to avoid any misunderstanding other wise Rising shading systems will not be responsible for any mistakes that may occur.

# Possible Module Combinations

Fabric Colour Swatch



Somfy Wind Sensor



Somfy Wind and Sun Sensor



Somfy Rain Sensor



Rising Infrared Heater



Aluminium Powder Coating



Aerosol Touch-up Spray Paint



Bi-Metal Holesaw



Silicone



Packaging with Wooden Crate



Ballcony Glass & Glazing Systems



Manufacturer of **Shading Systems**  
for Outdoor Spaces



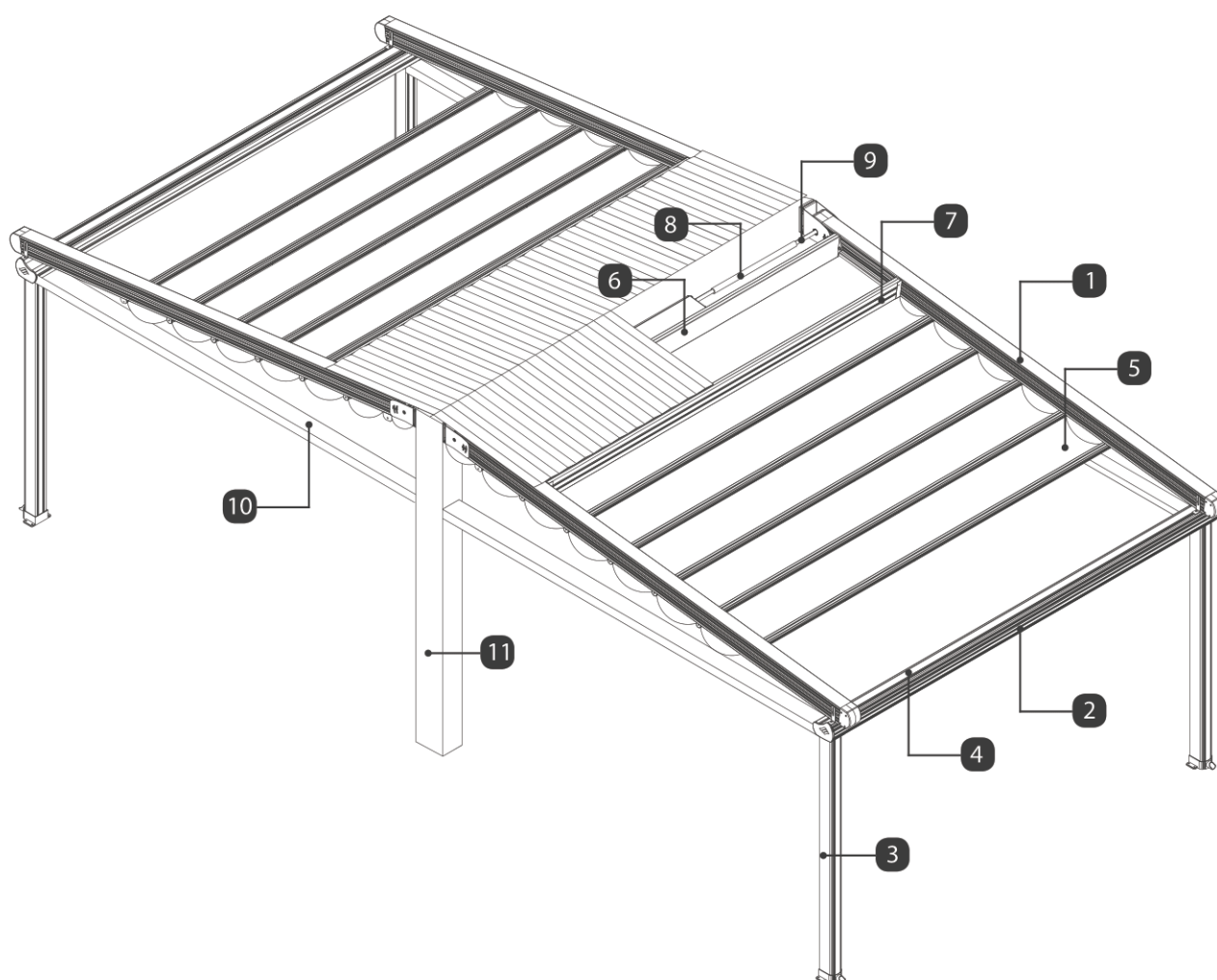
S T R I N G   L I G H T S  
O U T D O O R



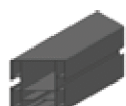
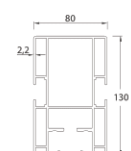
# R1 SUBULATE **QUERCUS MINIMA**

Technical Information List

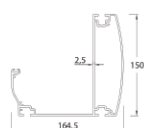
V 240318



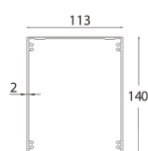
**1** Rafter Profile



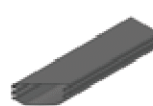
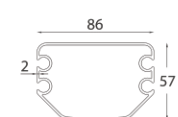
**2** Gutter Profile



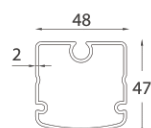
**3** Carrier Post Profile



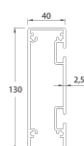
**4** Fabric Profile | Master



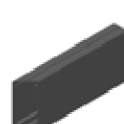
**5** Fabric Profile | Carrier



**6** Motor Box Profile



**7** Roof Sash Profile



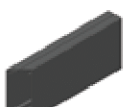
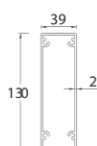
**8** Motor Shaft Pipe Profile | Thick



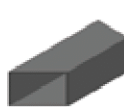
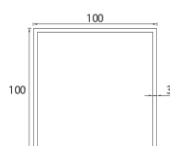
**9** Motor Shaft Pipe Profile | Thin



**10** Side Beam Profile



**11** Iron Profile 100x100





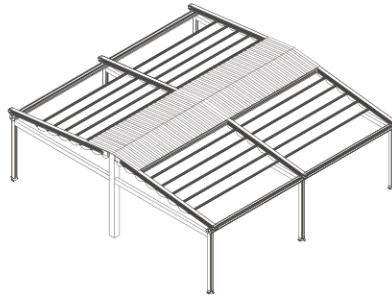
## Single Module

Max. Rafter Profile width as 4000  
Max. Carrier Post Profile width as 5000



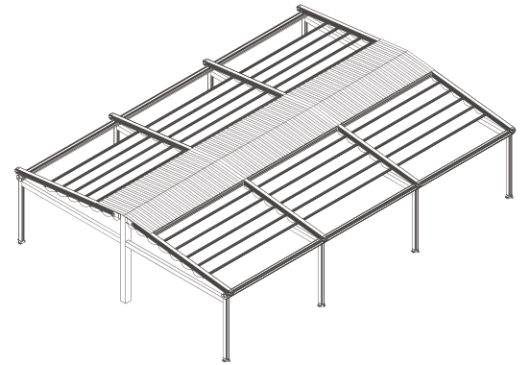
## Double Module

Max. Rafter Profile width as 8000  
Max. Carrier Post Profile width as 5000



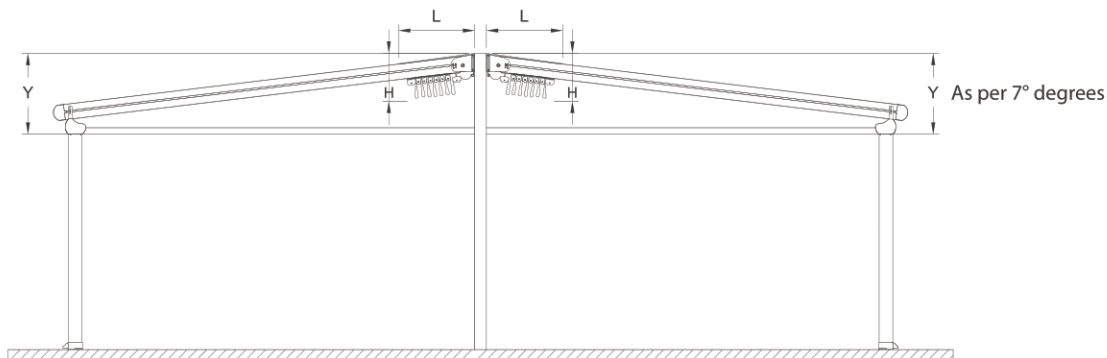
## Triple Module

Max. Rafter Profile width as 12000  
Max. Carrier Post Profile width as 2000



## Technical Side View

Size may vary upon the number of seals

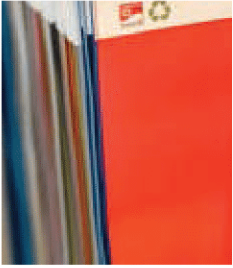


∇ Projection ^	Fabric Fall Height (H)	Hood Cover (L)	7° Degree Rule Fall Height (Y)	Fabric Profile Carrier
3000	519	710	650	7 pcs
4000	537	850	770	9 pcs
5000	555	990	890	11pcs
6000	573	1200	1010	13pcs
7000	591	1340	1130	15pcs

\* Distances between fabric profiles had been calculated and measured as 50 cm and it may. Vary upon the measurement of each project therefore you are kindly requested to Contact your key account manager in order to avoid any misunderstanding other wise Rising shading systems will not be responsible for any mistakes that may occur.

## Selection of Optional Items & Accessories

☐ Fabric Colour Swatch



☐ Somfy Wind Sensor



☐ Somfy Wind and Sun Sensor



☐ Somfy Rain Sensor



☐ Rising Infrared Heater



☐ Aluminium Powder Coating



☐ Aerosol Touch-up Spray Paint



☐ Bi-Metal Holesaw



☐ Silicone



☐ Packaging with Wooden Crate



☐ Ballcony Glass & Glazing Systems



Manufacturer of **Shading Systems**  
for Outdoor Spaces



STRING LIGHTS  

---

OUTDOOR

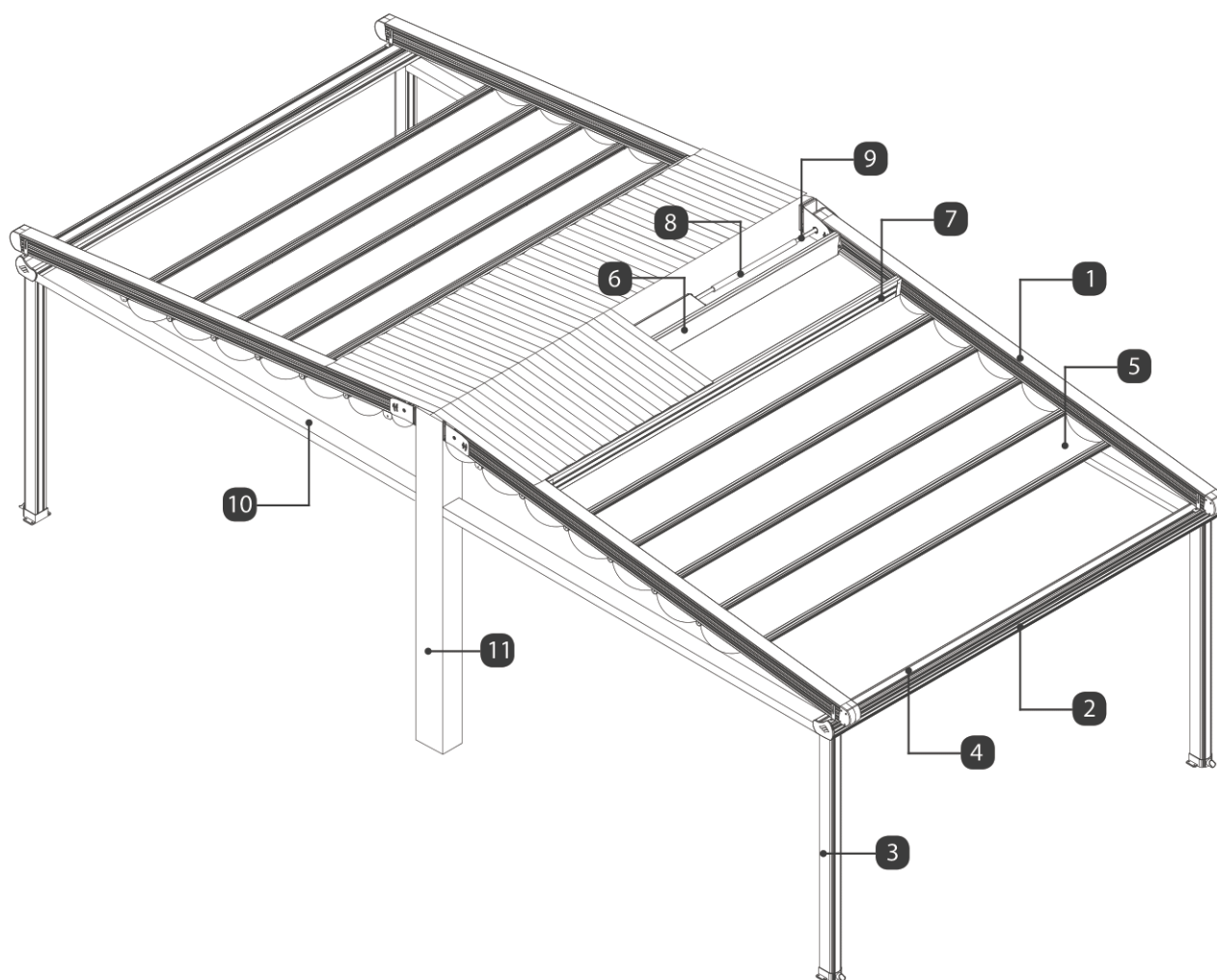
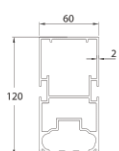
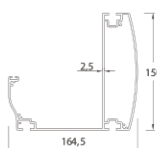
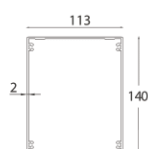
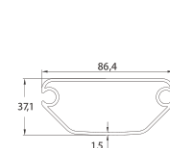
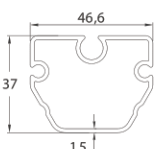
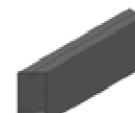
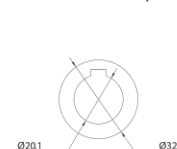
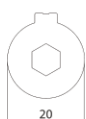
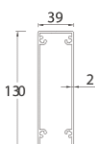
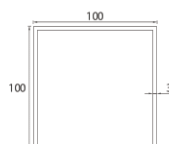
# R1 SUBULATE

## ULMUS

Technical Information List

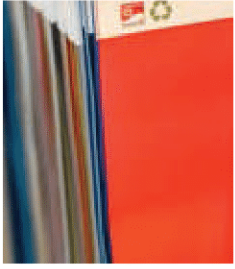
V 240318



**1** Rafter Profile**2** Gutter Profile**3** Carrier Post Profile**4** Fabric Profile | Master**5** Fabric Profile | Carrier**6** Motor Box Profile**7** Roof Sash Profile**8** Motor Shaft Pipe Profile | Thick**9** Motor Shaft Pipe Profile | Thin**10** Side Beam Profile**11** Iron Profile 100x100

## Possible Module Combinations

Fabric Colour Swatch



Somfy Wind Sensor



Somfy Wind and Sun Sensor



Somfy Rain Sensor



Rising Infrared Heater



Aluminium Powder Coating



Aerosol Touch-up Spray Paint



Bi-Metal Holesaw



Silicone



Packaging with Wooden Crate



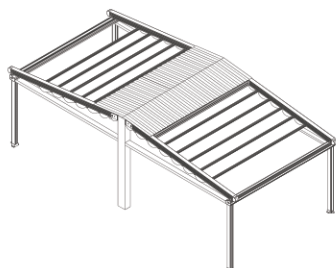
Ballcony Glass & Glazing Systems





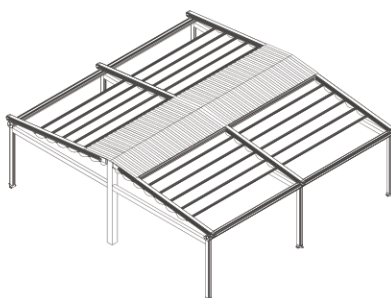
## Single Module

Max. Rafter Profile width as 4000  
Max. Carrier Post Profile width as 5000



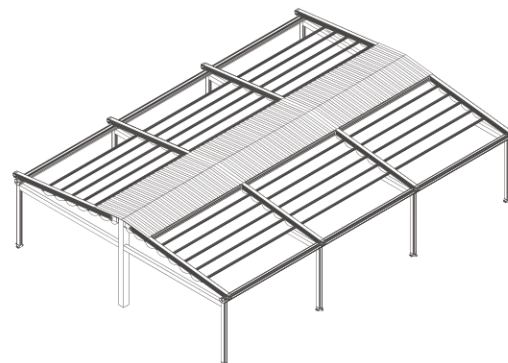
## Double Module

Max. Rafter Profile width as 8000  
Max. Carrier Post Profile width as 5000



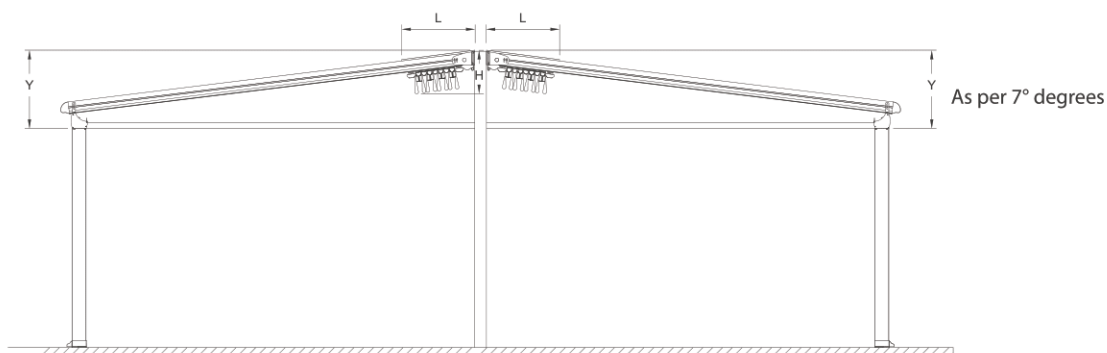
## Triple Module

Max. Rafter Profile width as 12000  
Max. Carrier Post Profile width as 2000



## Technical Side View

Size may vary upon the number of seals



∇ Projection ^	Fabric Fall Height (H)	Hood Cover (L)	7° Degree Rule Fall Height (Y)	Fabric Profile Carrier
3000	506	640	640	7 pcs
4000	520	760	760	9 pcs
5000	534	880	880	11pcs
6000	548	1000	1000	13pcs

\* Distances between fabric profiles had been calculated and measured as 50 cm and it may. Vary upon the measurement of each project therefore you are kindly requested to Contact your key account manager in order to avoid any misunderstanding other wise Rising shading systems will not be responsible for any mistakes that may occur.

Manufacturer of **Shading Systems**  
for Outdoor Spaces



S T R I N G   L I G H T S  
O U T D O O R