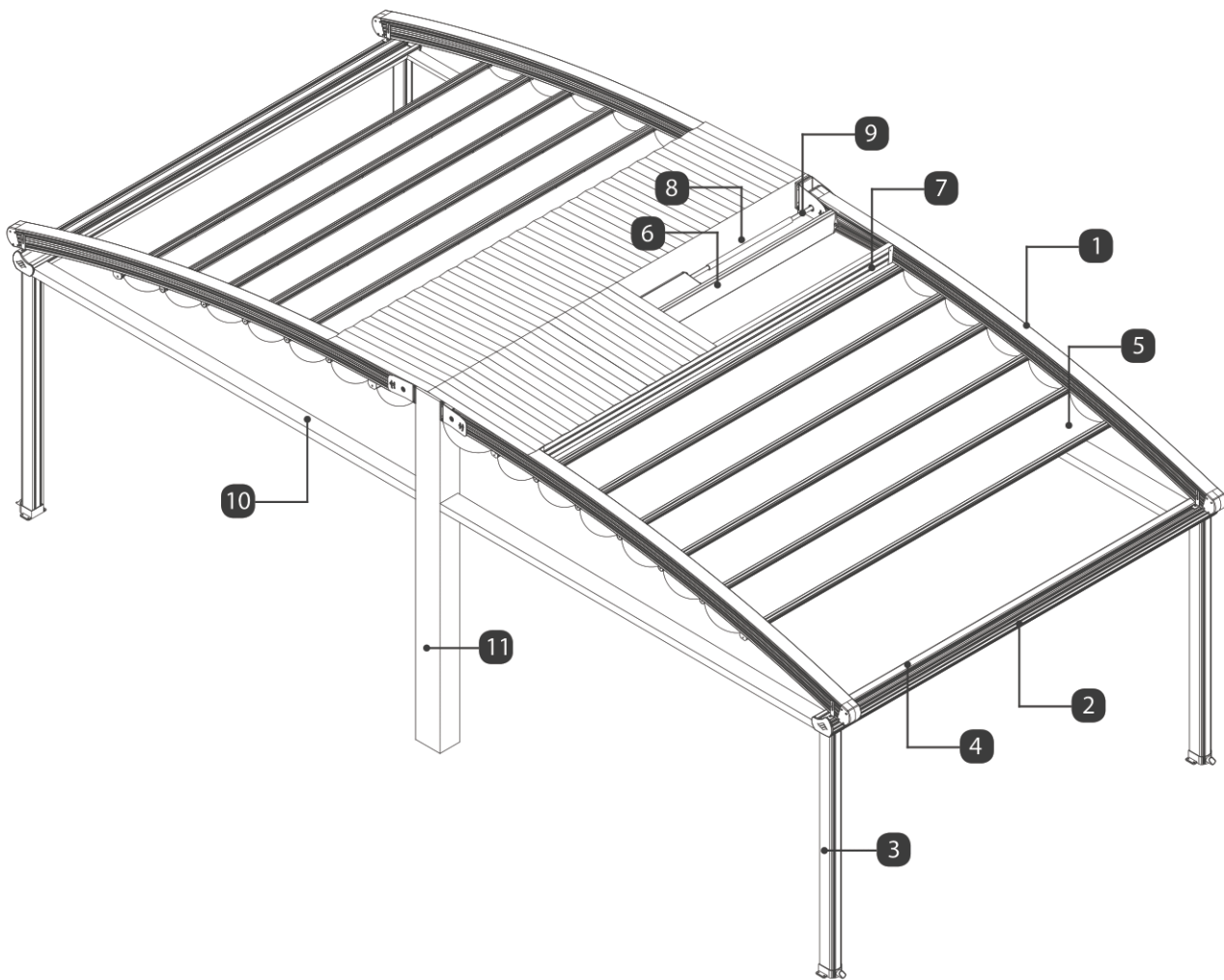


R1 FALCATE  
**TECTONA** 

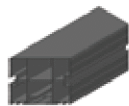
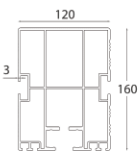
Technical Information List

V 240318

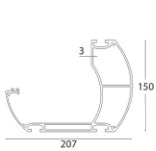




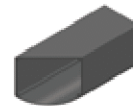
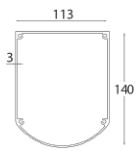
**1** Rafter Profile



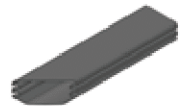
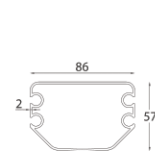
**2** Gutter Profile



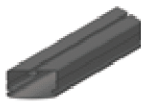
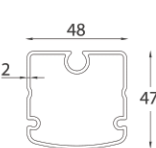
**3** Carrier Post Profile



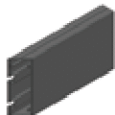
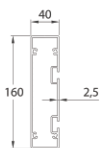
**4** Fabric Profile | Master



**5** Fabric Profile | Carrier



**6** Motor Box Profile



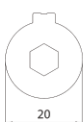
**7** Roof Sash Profile



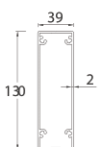
**8** Motor Shaft Pipe Profile | Thick



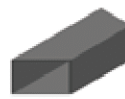
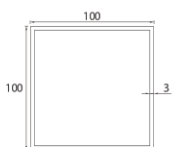
**9** Motor Shaft Pipe Profile | Thin



**10** Side Beam Profile



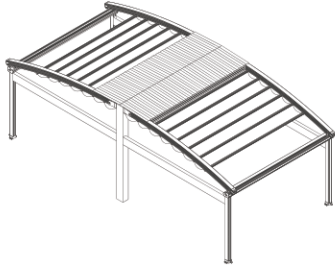
**11** Iron Profile 100x100



\* All dimensions shown above are in millimeters.

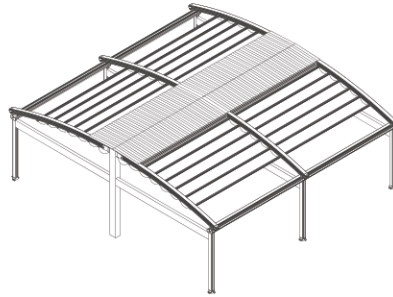
### Single Module

Max. Rafter Profile width as 4000  
Max. Carrier Post Profile width as 5000



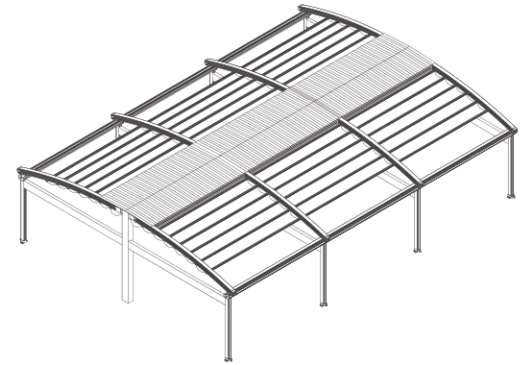
### Double Module

Max. Rafter Profile width as 8000  
Max. Carrier Post Profile width as 5000



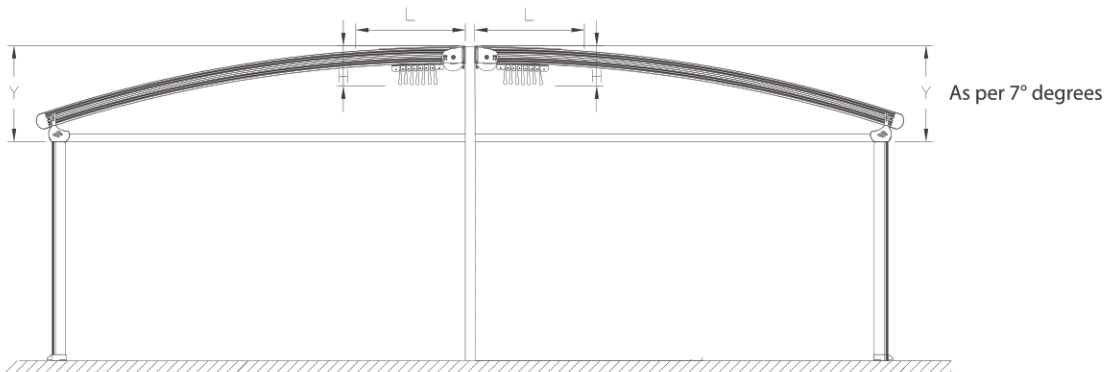
### Triple Module

Max. Rafter Profile width as 12000  
Max. Carrier Post Profile width as 2000



### Technical Side View

Size may vary upon the number of seals

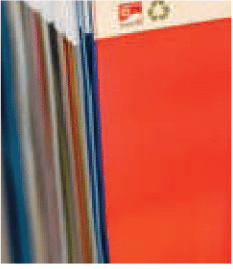


v Projection ^	Fabric Fall Height (H)	Hood Cover (L)	7° Degree Rule Fall Height (Y)	Fabric Profile Carrier
3000	562	710	920	7 pcs
4000	580	850	1073	9 pcs
5000	598	990	1206	11 pcs
6000	616	1200	1314	13 pcs
7000	634	1340	1405	15 pcs
8000	652	1480	1472	17 pcs
9000	670	1620	1517	19 pcs
10000	688	1760	1540	21 pcs

\* Distances between fabric profiles had been calculated and measured as 50 cm and it may vary upon the measurement of each project therefore you are kindly requested to Contact your key account manager in order to avoid any misunderstanding other wise Rising shading systems will not be responsible for any mistakes that may occur.

# Possible Module Combinations

Fabric Colour Swatch



Somfy Wind Sensor



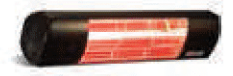
Somfy Wind and Sun Sensor



Somfy Rain Sensor



Rising Infrared Heater



Aluminium Powder Coating



Aerosol Touch-up Spray Paint



Bi-Metal Holesaw



Silicone



Packaging with Wooden Crate



Balcony Glass & Glazing Systems



Manufacturer of **Shading Systems**  
for Outdoor Spaces



STRING LIGHTS  

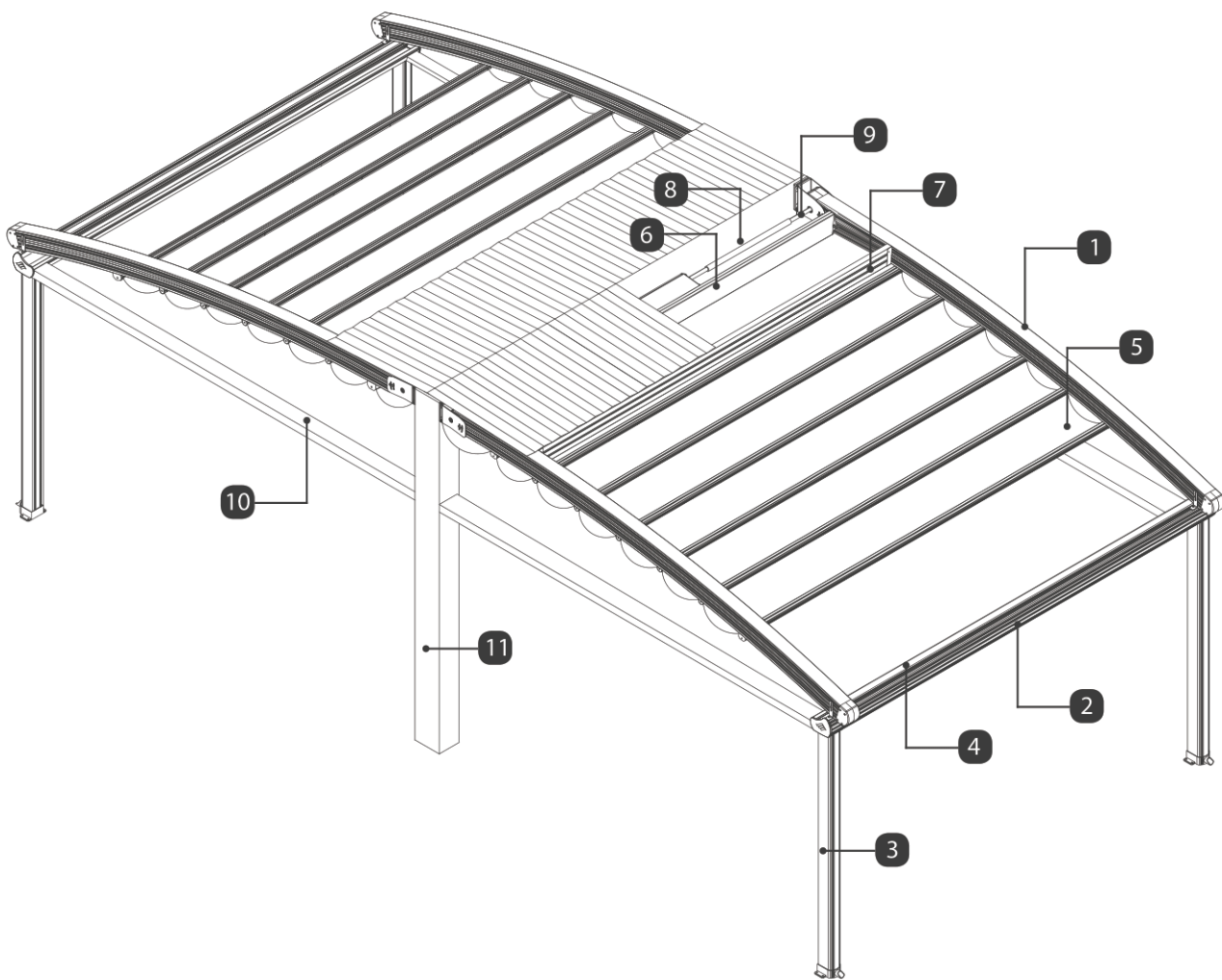
---

OUTDOOR

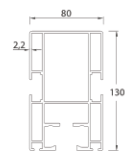
**R1 FALCATE**  
**QUERCUS MINIMA** 

Technical Information List

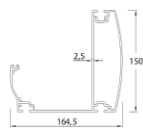
V 240318



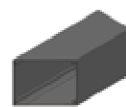
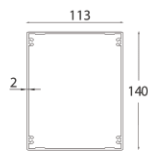
1 Rafter Profile



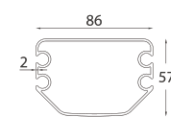
2 Gutter Profile



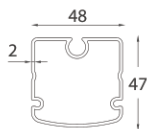
3 Carrier Post Profile



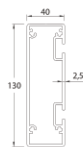
4 Fabric Profile | Master



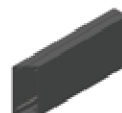
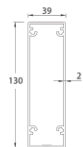
5 Fabric Profile | Carrier



6 Motor Box Profile



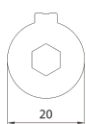
7 Roof Sash Profile



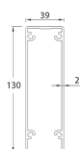
8 Motor Shaft Pipe Profile | Thick



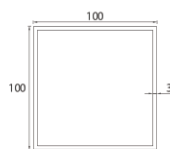
9 Motor Shaft Pipe Profile | Thin



10 Side Beam Profile



11 Iron Profile 100x100

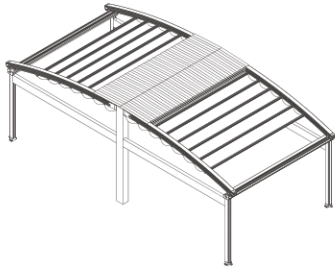


\* All dimensions shown above are in millimeters.



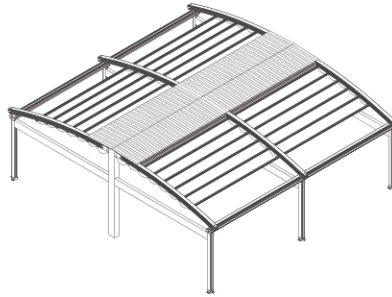
### Single Module

Max. Rafter Profile width as 4000  
Max. Carrier Post Profile width as 5000



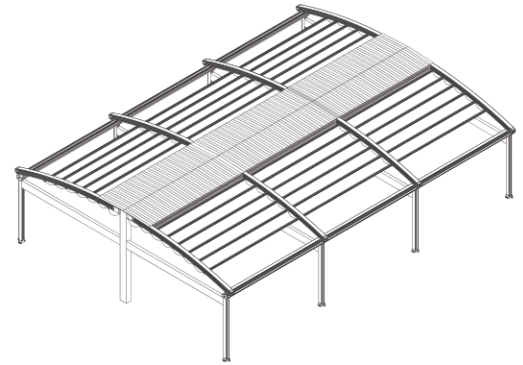
### Double Module

Max. Rafter Profile width as 8000  
Max. Carrier Post Profile width as 5000



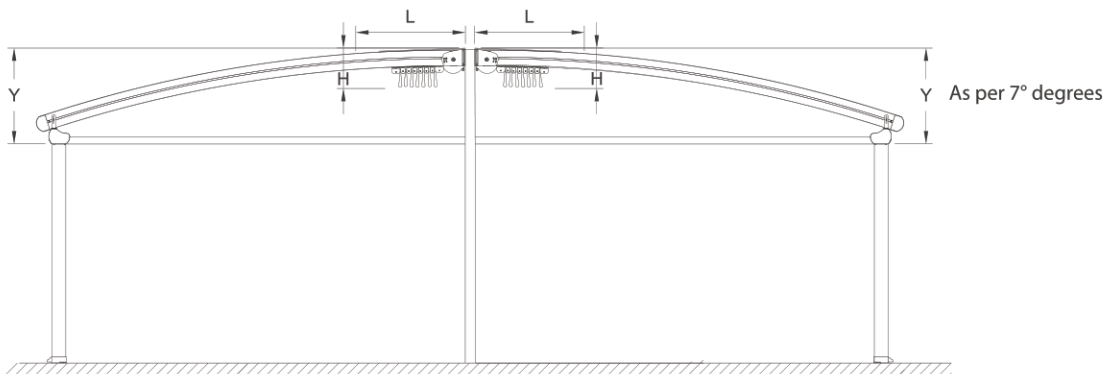
### Triple Module

Max. Rafter Profile width as 12000  
Max. Carrier Post Profile width as 2000



### Technical Side View

Size may vary upon the number of seals

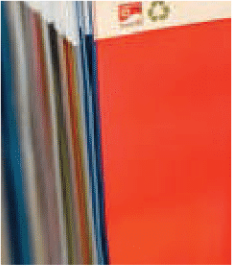


v Projection ^	Fabric Fall Height (H)	Hood Cover (L)	7° Degree Rule Fall Height (Y)	Fabric Profile Carrier
3000	508	710	856	7 pcs
4000	516	850	978	9 pcs
5000	524	990	1060	11 pcs
6000	532	1200	1119	13 pcs
7000	540	1340	1130	15 pcs

\* Distances between fabric profiles had been calculated and measured as 50 cm and it may. Vary upon the measurement of each project therefore you are kindly requested to Contact your key account manager in order to avoid any misunderstanding other wise Rising shading systems will not be responsible for any mistakes that may occur.

# Possible Module Combinations

Fabric Colour Swatch



Somfy Wind Sensor



Somfy Wind and Sun Sensor



Somfy Rain Sensor



Rising Infrared Heater



Aluminium Powder Coating



Aerosol Touch-up Spray Paint



Bi-Metal Holesaw



Silicone



Packaging with Wooden Crate



Ballcony Glass & Glazing Systems



Manufacturer of **Shading Systems**  
for Outdoor Spaces



S T R I N G   L I G H T S  

---

O U T D O O R