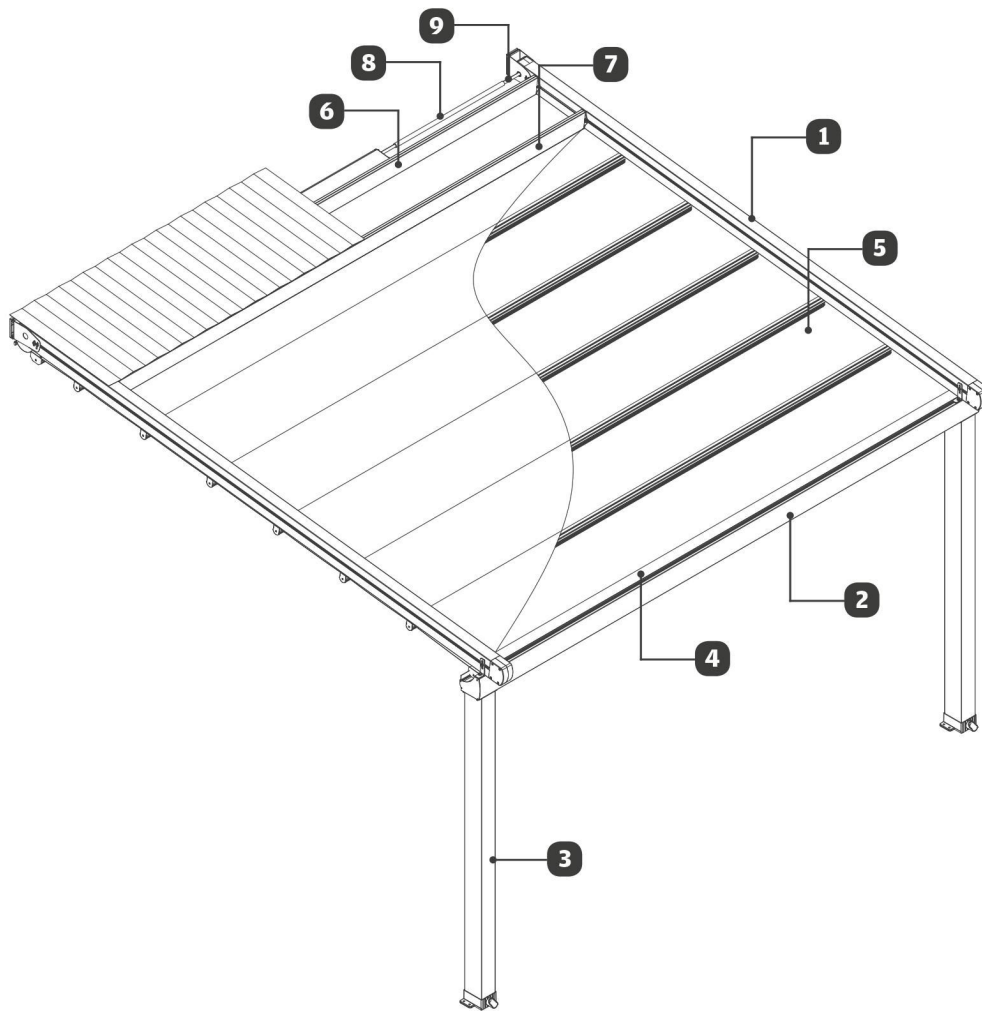
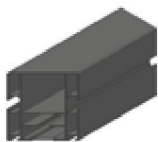
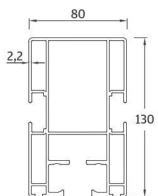
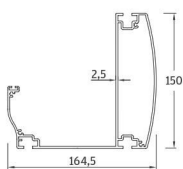
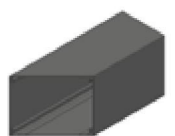
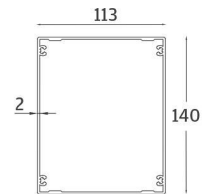
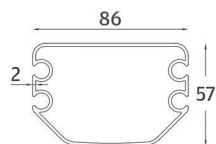
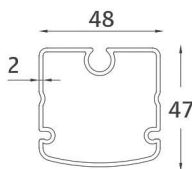
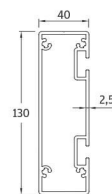
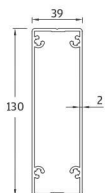
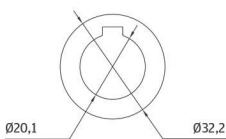
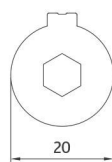


SUBULATE **QUERCUS MINIMA**

Technical Information List

V 030818



**1** Rafter Profile**2** Gutter Profile**3** Carrier Post Profile**4** Fabric Profile | Master**5** Fabric Profile | Carrier**6** Motor Box Profile**7** Roof Sash Profile**8** Motor Shaft Pipe Profile | Thick**9** Motor Shaft Pipe Profile | Thin

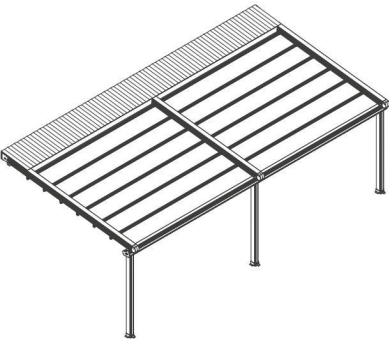
Single Module

Max. Width as 4000
Standard Carrier Post Profile height as 2500



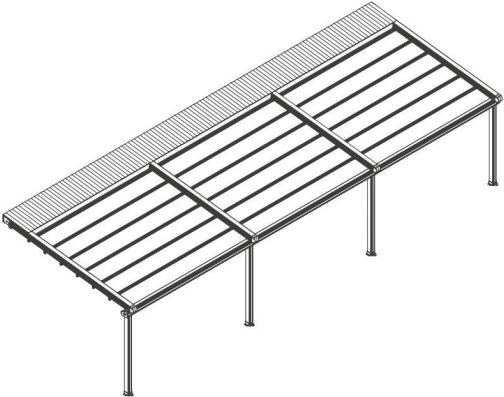
Double Module

Max. Width as 8000
Standard Carrier Post Profile height as 2500

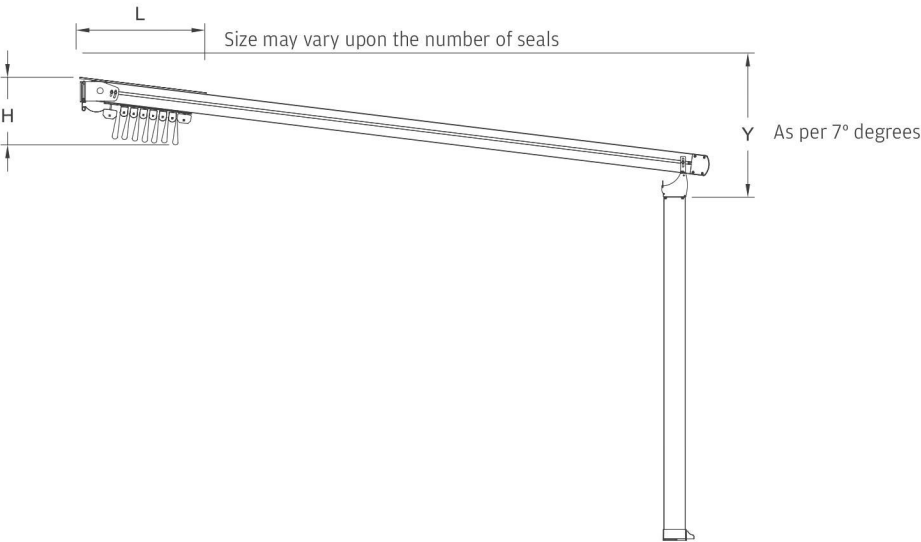


Triple Module

Max. Width as 12000
Standard Carrier Post Profile height as 2500



Technical Side View



√ Projection ^	Fabric Fall Height (H)	Hood Cover (L)	7° Degree Rule Fall Height (V)	Fabric Profile Carrier
3000	519	710	650	7 pcs
3500	528	780	710	8 pcs
4000	537	850	770	9 pcs
4500	546	920	830	10 pcs
5000	555	990	890	11 pcs
5500	564	1130	950	12 pcs
6000	573	1200	1010	13 pcs
6500	582	1270	1070	14 pcs
7000	591	1340	1130	15 pcs

* Distances between fabric profiles had been calculated and measured as 50 cm and it may. Vary upon the measurement of each project therefore you are kindly requested to Contact your key account manager in order to avoid any misunderstanding other wise Rising shading systems will not be responsible for any mistakes that may occur.

Fabric Colour Swatch



Somfy Wind Sensor



Somfy Wind and Sun Sensor



Somfy Rain Sensor



Rising Infrared Heater



Aluminium Powder Coating



Aerosol Touch-up Spray Paint



Bi-Metal Holesaw



Silicone



Packaging with Wooden Crate



Ballcony Glass & Glazing Systems



Manufacturer of **Shading Systems**
for Outdoor Spaces



S T R I N G L I G H T S

O U T D O O R