

# R4 SUBULATE

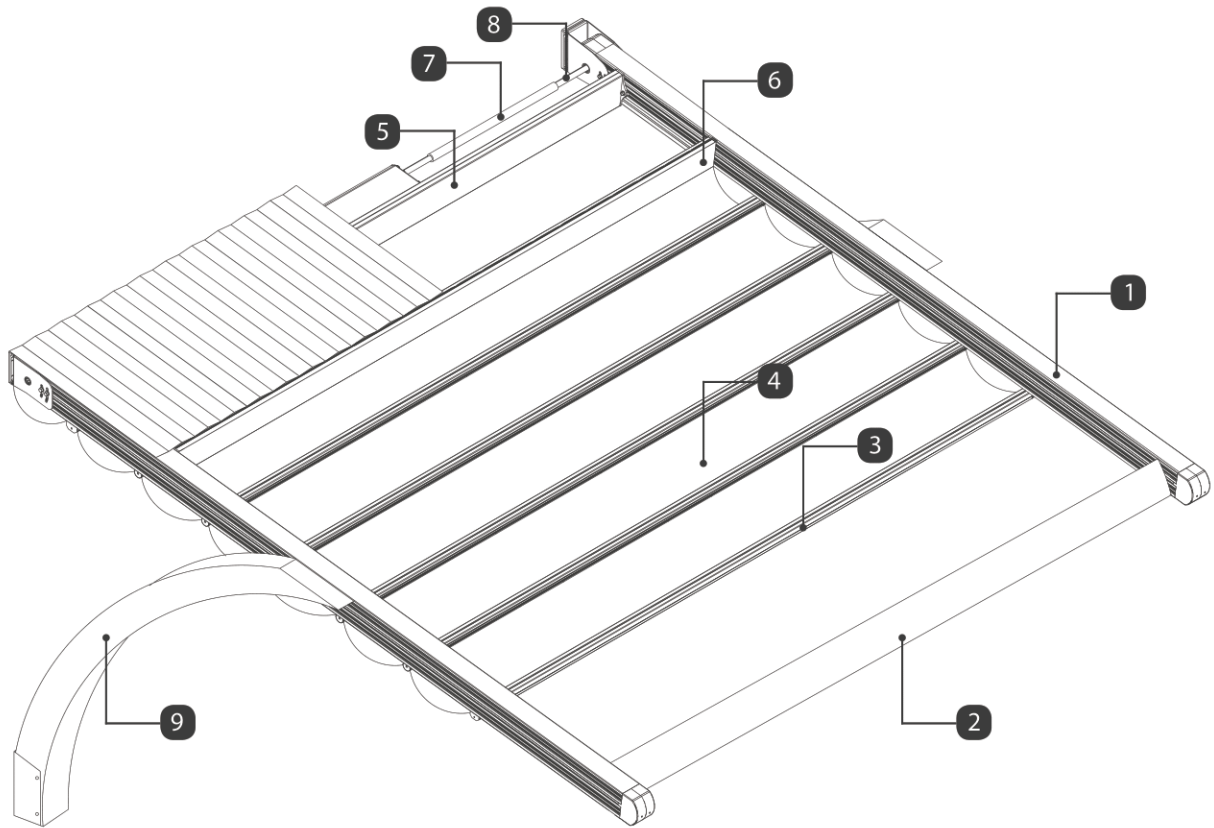
# **TECTONA**



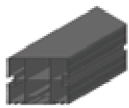
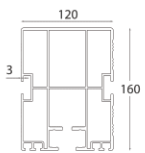
Technical Information List

V 240318

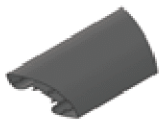
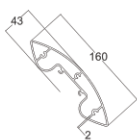




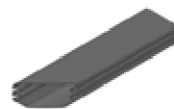
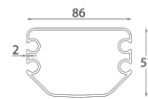
1 Rafter Profile



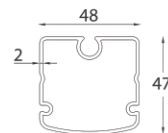
2 Aerofoil Louvre Profile



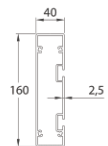
3 Fabric Profile | Master



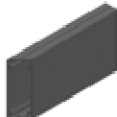
4 Fabric Profile | Carrier



5 Motor Box Profile



6 Roof Sash Profile



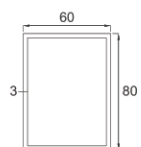
7 Motor Shaft Pipe Profile | Thick



8 Motor Shaft Pipe Profile | Thin

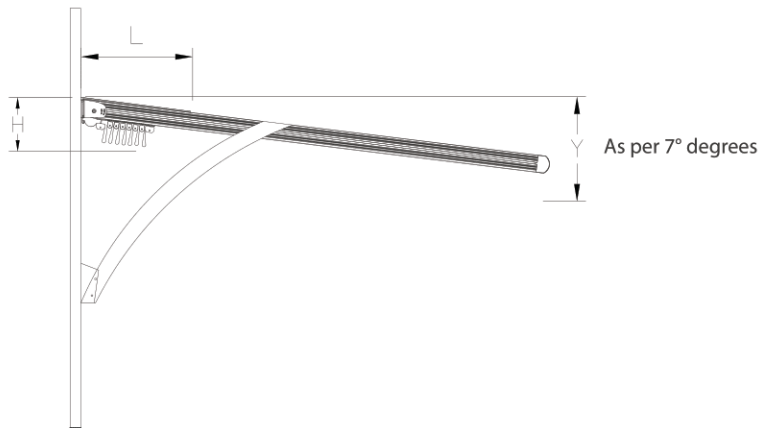


9 Iron Profile 60x60



\* All dimensions shown above are in millimeters.

Size may vary upon the number of seals

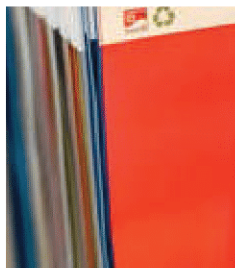


∇ Projection ^	Fabric Fall Height (H)	Hood Cover (L)	7° Degree Rule Fall Height (Y)	Fabric Profile Carrier
3000	542	710	680	7 pcs
4000	554	850	803	9 pcs

\* Distances between fabric profiles had been calculated and measured as 50 cm and it may. Vary upon the measurement of each project therefore you are kindly requested to Contact your key account manager in order to avoid any misunderstanding other wise Rising shading systems will not be responsible for any mistakes that may occur.

# Possible Module Combinations

Fabric Colour Swatch



Somfy Wind Sensor



Somfy Wind and Sun Sensor



Somfy Rain Sensor



Rising Infrared Heater



Aluminium Powder Coating



Aerosol Touch-up Spray Paint



Bi-Metal Holesaw



Silicone



Packaging with Wooden Crate



Ballcony Glass & Glazing Systems



Manufacturer of **Shading Systems**  
for Outdoor Spaces

---

**Address :** Unit C,  
Canalside North Business Park,  
John Gilbert Way, Trafford Park,  
Manchester, M17 1UP  
United Kingdom

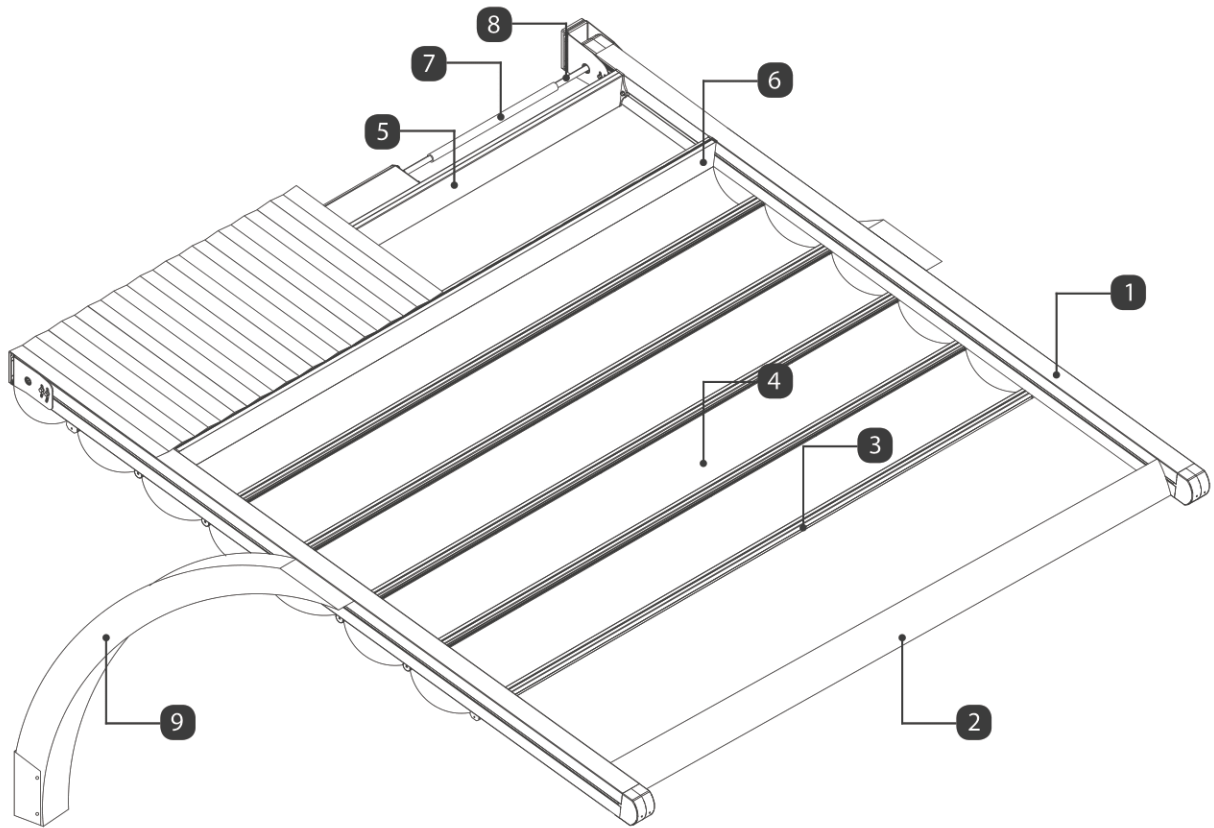
**Phone :** +44 (0) 845 400 4677

**E-mail :** [contact@gossoutdoor.co.uk](mailto:contact@gossoutdoor.co.uk)

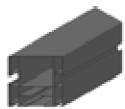
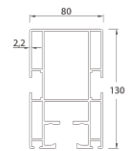
**R4 SUBULATE**  
**QUERCUS MINIMA** 

Technical Information List

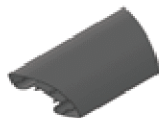
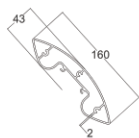
V 240318



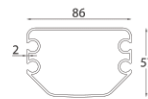
1 Rafter Profile



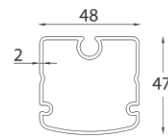
2 Aerofoil Louvre Profile



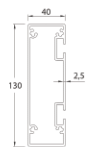
3 Fabric Profile | Master



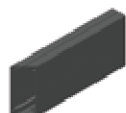
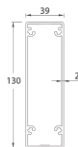
4 Fabric Profile | Carrier



5 Motor Box Profile



6 Roof Sash Profile



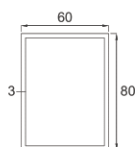
7 Motor Shaft Pipe Profile | Thick



8 Motor Shaft Pipe Profile | Thin



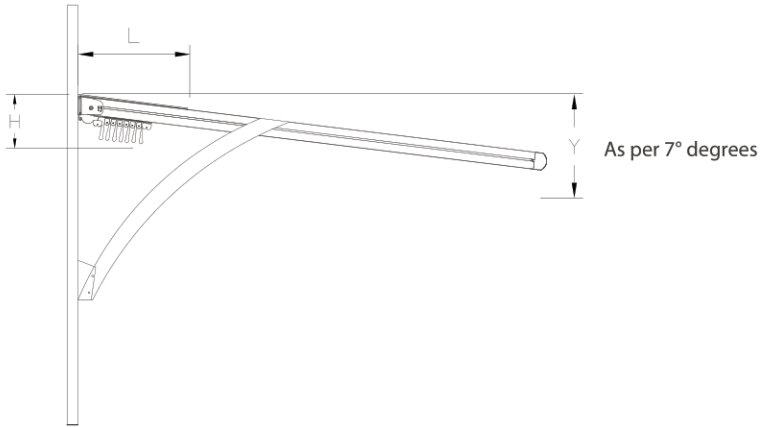
9 Iron Profile 60x60



\* All dimensions shown above are in millimeters.



Size may vary upon the number of seals

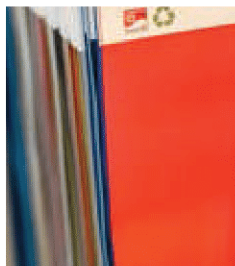


∨ Projection ^	Fabric Fall Height (H)	Hood Cover (L)	7° Degree Rule Fall Height (Y)	Fabric Profile Carrier
3000	519	710	650	7 pcs
4000	537	850	770	9 pcs

\* Distances between fabric profiles had been calculated and measured as 50 cm and it may. Vary upon the measurement of each project therefore you are kindly requested to Contact your key account manager in order to avoid any misunderstanding other wise Rising shading systems will not be responsible for any mistakes that may occur.

# Possible Module Combinations

Fabric Colour Swatch



Somfy Wind Sensor



Somfy Wind and Sun Sensor



Somfy Rain Sensor



Rising Infrared Heater



Aluminium Powder Coating



Aerosol Touch-up Spray Paint



Bi-Metal Holesaw



Silicone



Packaging with Wooden Crate



Ballcony Glass & Glazing Systems

Manufacturer of **Shading Systems**  
for Outdoor Spaces

---

**Address :** Unit C,  
Canalside North Business Park,  
John Gilbert Way, Trafford Park,  
Manchester, M17 1UP  
United Kingdom

**Phone :** +44 (0) 800 400 4549

**E-mail :** [contact@gossoutdoor.co.uk](mailto:contact@gossoutdoor.co.uk)