





INTRODUCTION | BEYOND IMAGINATION

OUR PRODUCT RANGE

BIOCLIMATIC PERGOLAS

RETRACTABLE PERGOLAS

AWNINGS

MOTORISED BLINDS

MORE PRODUCTS

OUR CLIENTS



Welcome to String Lights Outdoor. We pride ourselves on the versatility of products, paired with durability against all weathers, allowing customers to complete their perfect outdoor living space in style. Wherever your needs, we are confident that String Lights Outdoor has the solution. There is a rich selection of products including luxurious Bioclimatic and Retractable Pergola Systems, Awning systems, Motorised Blinds, Gazebos & Pavilions providing a statement which is bold yet elegant. We also provide Outdoor Furniture, Parasol Systems, Aluminium Solutions, Glazing Systems and Outdoor Accessories. At String Lights Outdoor all products offer a variety in size, colour, and functionality.

As one of the US's most respected manufacturers of premium-quality roof and shading systems, to both residential and commercial markets, we are known within the industry for iconic outdoor designs that are intelligent, elegant and dynamic. From the head office in Manchester, we offer the best-quality products with an all-rounded service from initial advice on projects followed by the personalised design, supply and installation across to the USA.

Considering the fast-changing conditions of today's world, String Lights Outdoor continues to grow by achieving positive results and adapting to trends effectively and rapidly based on the latest technologies in a dynamic fashion. Focusing on innovative design, superior quality customer service, String Lights Outdoor builds a glorious bridge between indoor and outdoor spaces and brings your dream space right under your roof.





You are only limited by your imagination and we will get you there and beyond. Awnings are provided for every situation. Whether residential or commercial the same dedication and commitment to an outdoor cover that works for a given application is paramount. Awnings can be used for all sorts of design and practicality; terrace shade, conservatory aesthetics, expansion of space, smoking areas - limitless opportunities.

Fully automated aluminium pergola systems, adjustable specifications giving you endless possibilities providing protection from the sun. A work of wonders, the Bioclimatic Pergola series is one of our most contemporary installations. The B-Cube series can create a bold statement in your outdoor space as well as being an incredibly flexible solution to extending your outreach, with a variety of options to suit every individual project - whether standing tall by itself or attached to your property.

Our Retractable Pergolas come as three different stunning modules; The Subulate, The Falcate and The Unifoliate. These Retractable Pergolas come with gorgeous fabrics which are suitable for all kinds of weather, and also come in two different sizes, a Quercus Minma and a Tectona. The Quercus minima is our more popular smaller module however if you're looking for something a bit bigger and grander our Tectona models can provide just that. Retractable Pergolas provide that dash of luxury you've been searching for in your outdoor space.

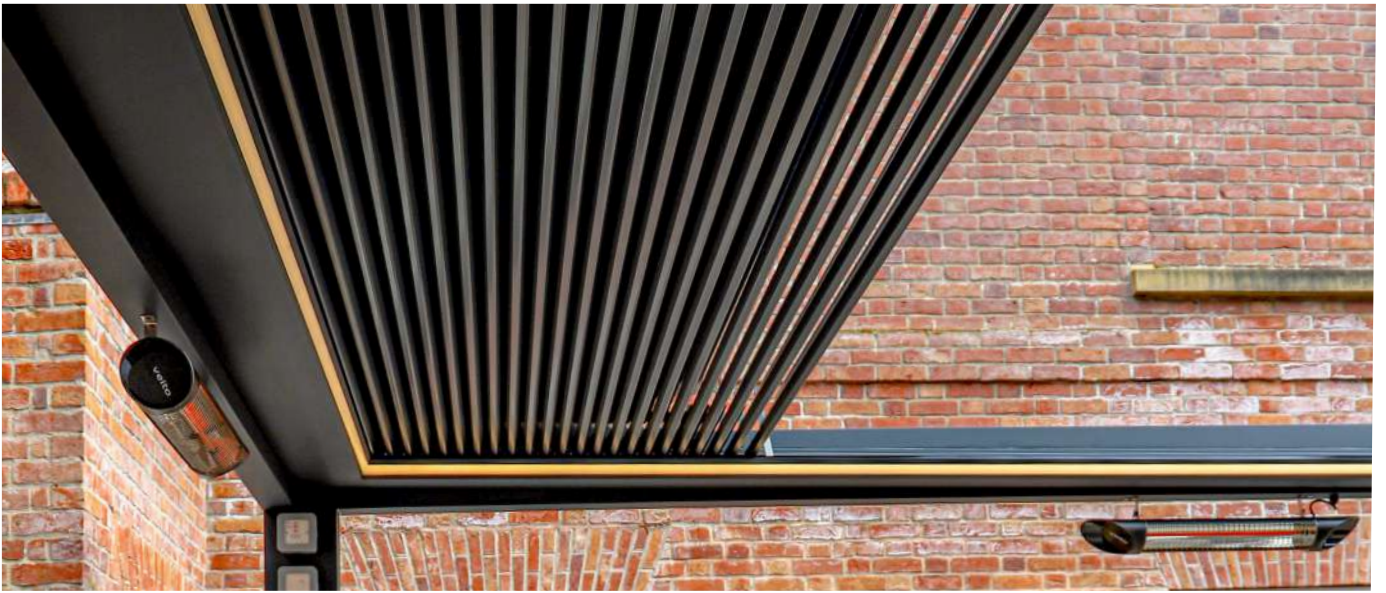
String Lights Outdoor has a range of different products but we are never prescriptive in approach. Our talented team will listen to customers' aspirations and offer reliable, prudent advice based on any given setting and intended use. The following pages, we illustrate the portfolio of options from the perspective of what we can do. We show some examples and technical specifications and conclude with reference sites and clients whom we are proud to support.

It is no surprise in the commercial, retail, leisure and hospitality sectors that we have become the preferred supplier for several 'household' brand names. We refer to 'shading systems' but to be factually correct we are offering protection through all elements and weather conditions, from rain and shine.

Different shapes and different sizes are available, but an unwavering commitment to customer satisfaction whilst providing quality products is our driver. We only use the best and our specifications include Somfy motors, Sattler fabrics, and Serge Ferrari fabrics and membranes. All of which are reputable suppliers that we utilise to deliver optimum, functioning products for our customers but at realistic prices.

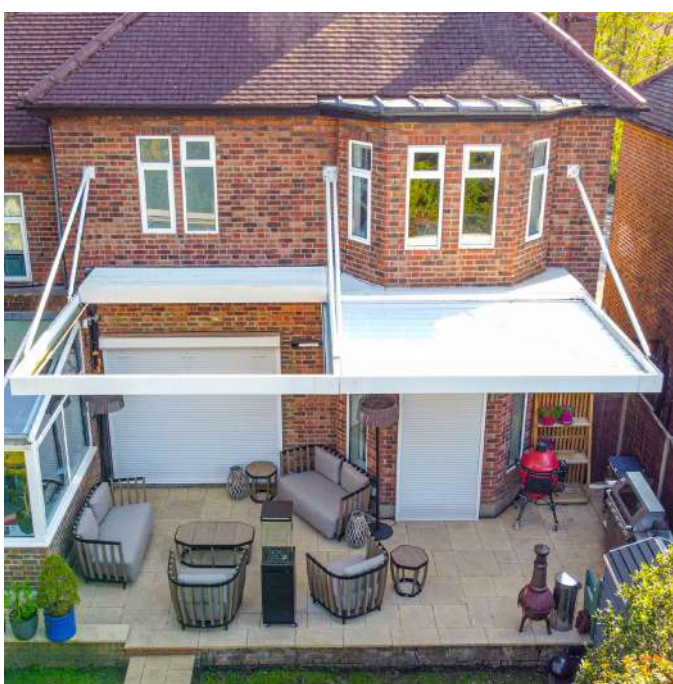


We now can be seen in global markets. Since our origins in the country of Turkey, we are now represented in four continents and 74 countries - as the increasingly discerning customers seek unrivalled shading solutions to complement infrastructure and facility designs.



One of our most contemporary designs, our Bioclimatic (B-Cube) Pergolas are as innovative and modern as they are practical. We have devised a flexible solution to outdoor living and have turned it into one of the most stylish outdoor shading systems we provide.

We have utilised the B-Cube sharp edge cuboid shape to add a dash of luxury wherever it is placed. Our main priority is creating a modern oasis for you to escape in with your Bioclimatic Pergola.



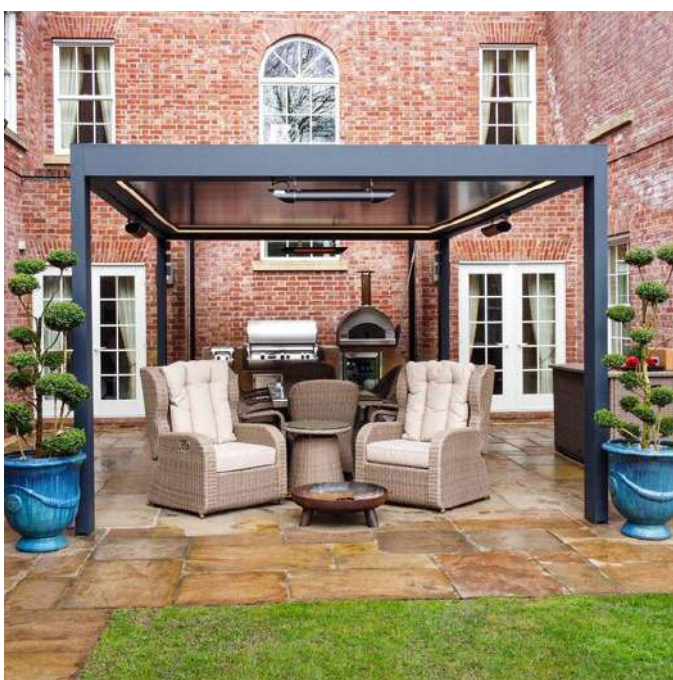
From our B-Cube series we have 4 systems that are attached systems, these include: B-Cube Classic, B-Cube Urban, B-Cube Infinity and B-Cube Space.

Louvres rotate and retract, has 2 front posts.

Louvres rotate and retract, has no posts but instead a robust hanging system.

Louvres rotate and retract, has no posts and instead is attached to an already existing structure, not a wall.

Louvres do not rotate and retract back but instead tilt, has 2 front posts.



From our B-Cube series we have 2 systems that are freestanding systems, these include: B-Cube Freedom and B-Cube Galaxy.

Louvres rotate and retract, has 4 posts to make it freestanding.

Louvres do not rotate and retract back but instead tilt, has 4 posts to make it freestanding.

In approaching the selection of the most suited shading system for retractable pergolas, we have devised a simple schematic that might help identify the variations in structure, design and aesthetics that best compliment any project.

For ease of appreciation, we have utilised the concept of these differing leave shapes to distinguish the type of pergola that you may want. The main ideology is the shape curvature as in different conditions, the suitability of the variants can differ and we want to show you the best possible result.



This is a flexible system used as a fixed to a wall option with retractable and 'flat' outlook. A pergola that, is ideal to suit everyday budgets.



Sometimes a semi curve and sloped profile may be required and the aesthetics of the Falcate model can be more suited.



The application of a design with bend is an alternative that has proven popular in both residential and leisure project work.

Once the decision taken into which shape, then the consideration stretches to the sub-structures. This is underpinned and determined according to the dimensions of the pergola and durability of profile. Full advisory considerations including shading characteristic and wind tolerance (including Beaufort scale) are taken into account. There are two versions of sub-structures that we offer and can explain further in consultations prior to any procurement decision; the Tectona and the Quercus Minima.



You are only limited by your imagination and we get there and beyond. Awnings are provided for every situation. Whether residential or commercial the same dedication and commitment to an outdoor cover that works for a given application is paramount. Awnings can be used for all sorts of design and practicality - terrace shade, conservatory aesthetics, expansion of space, smoking areas - limitless opportunities.

To help select the most suited shading system for awnings, we have a simple guidance framework. We offer the best-practice advice to determine what shading solutions are fit for purpose. The following images illustrate options that are most commonly sought from the String Lights Outdoor's customers.

Our Classic Awnings consist of; Sunshine, Moonlight and Twin Range.

These are our most economical models with attributes of: aluminium (rust free) profiles, retrained cleanliness due to design which allows ease of water flow and is repellent of rain.



Our Cassette Awnings consist of; Pars, Pars Plus and Pars Plus Luxe.

These are our awnings that provide a bit of an individual touch to whoever requires a bit of luxury in their outdoor living space.



Our 'Other' Awnings consist of; Janela, Mediterranean and Bespoke Fixed Solutions.

These are our awnings for those who prefer a more traditional atmosphere in their outdoor living space.







To help select the most suited shading system for motorised blinds, we have provided a simple guidance framework below.

They are a practical and stylish addition to add to your shading system and get the most out of it.



The motorised blinds that we refer to are those that fit well and fulfil the aspirations of the pergola structures that we offer to install here at String Lights Outdoor. They can either come as vertical or horizontal that provide traditional shading through the modern, innovative and stylish guillotine format.

Vertical motorised blinds adds an aesthetically pleasing finish to a home or venue's style. Selection can either be contemporary or traditional. Somfy 'one click' technology facilitates ease of use and user-friendly automation right at your finger tips.

This addition with the correct fabric choice enable moderation of natural light, helps reduce glare and gives that additional privacy, as required.



External screens are an alternative based on either the Guillotine Glazing or Vertical Motorised system. The latter is a popular selection in the modern environment, with smooth seamless automation; whereas, the Rail system is especially durable in bad weather conditions and affords a solution when an ease of movement is favoured - a simple rail system fits into the pergola's framework systems.

Here at String Lights Outdoor we sell other additional products that may not be as popular as some of our other products, however deserve the same attention to detail we provide. These include stunning products such as our Outdoor Furniture, Pavilions and Parasols.

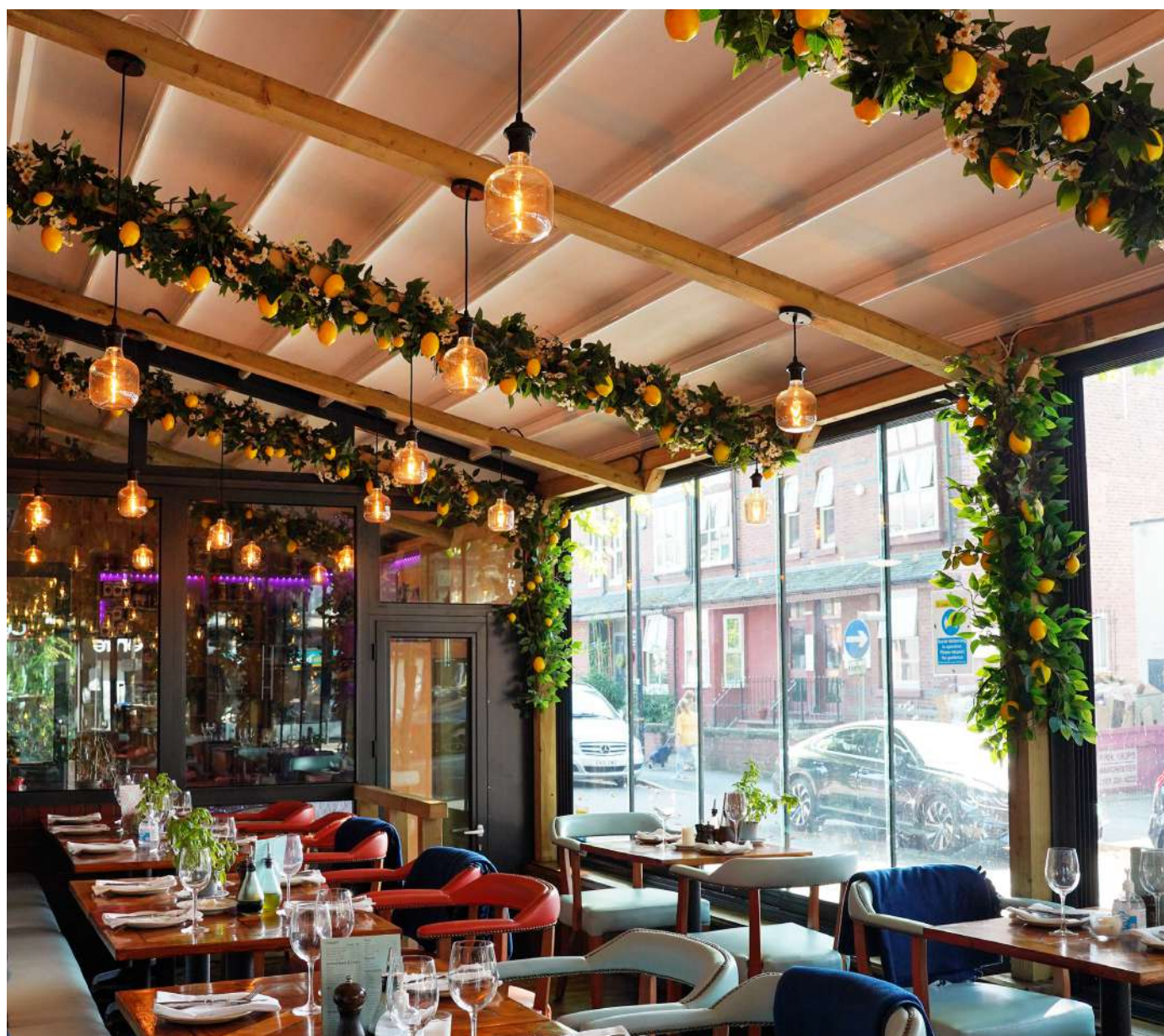
Our additional products also include our top of the range Somfy gadgets and also our stunning, practical fabrics.





The awesome clients we get work with every day.

Our clients are an extension of String Lights Outdoor. They're more unique. We share the same passion and creativity and authenticity reaching customers as they do. So we'd like to say a big thank you to all of them for choosing String Lights Outdoor and living life beyond imagination.



SOHO

moloko



Mulino
BAR - CICHETTI - PIZZERIA



Get in contact with one of the String Lights Outdoor team members today by calling 281.720.7272 or emailing to contact@stringlightsoutdoor.com

What are you waiting for? Start creating your dream outdoor space with us today!

